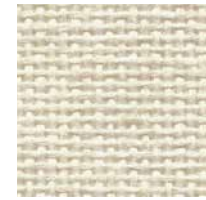


# FR701® 2100

## Panel Acoustic



**Eggshell**  
144



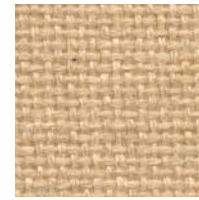
**Wheat**  
130



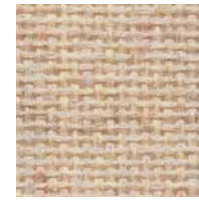
**Bone**  
748



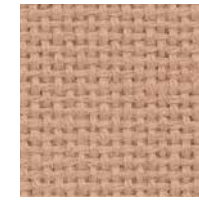
**Buff**  
460



**Straw**  
747



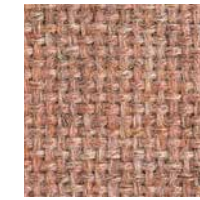
**Vanilla Neutral**  
403



**Terra**  
751



**Cherry Neutral**  
400



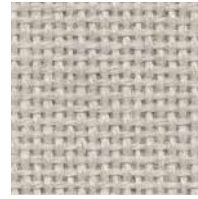
**Cinnabar**  
422



**Rose Quartz**  
390



**Quartz**  
380



**Pearl**  
481



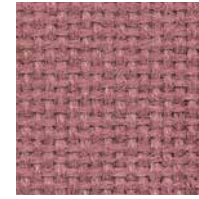
**Desert Sand**  
758



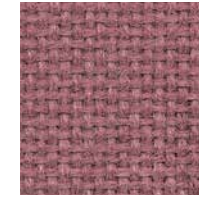
**Apricot Neutral**  
404



**Pumice**  
423



**Bronze**  
545



**Sienna**  
475



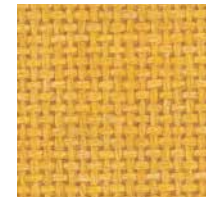
**Red**  
799



**Claret Accent**  
418



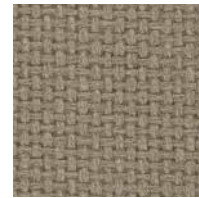
**Deep Burgundy**  
556



**Sunshine**  
797



**Light Moss**  
754



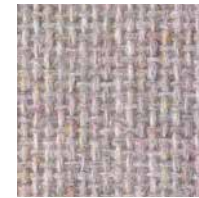
**Earth**  
792



**Moleskin**  
796



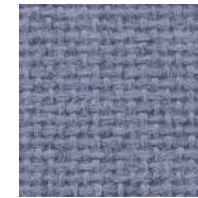
**Chocolate**  
793



**Lavender Neutral**  
405



**Lilac**  
752



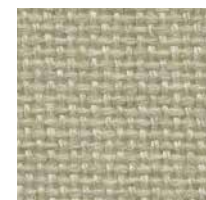
**Violet**  
753



**Amethyst**  
424



**Iris**  
798



**Dune**  
749



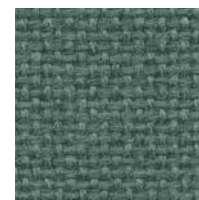
**Leaf**  
755



**Stream**  
757



**Aquamarine**  
381



**Blue Spruce**  
467



**Eucalyptus**  
468



**Green Neutral**  
402



**Lake**  
756



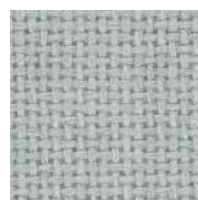
**Chrome Green**  
549



**Ultramarine**  
470



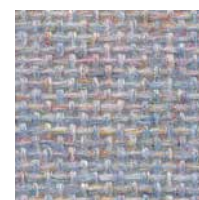
**Verte Papier**  
561



**Coin**  
794



**Blue Papier**  
539



**Blue Neutral**  
401



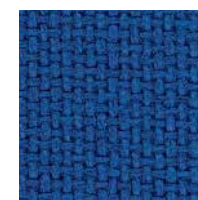
**Crystal Blue**  
175



**Bayberry**  
486



**Wedgewood**  
150



**Cobalt**  
420



**Baltic**  
153



**Blue Plum**  
553



**White**  
224



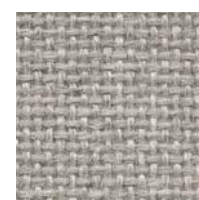
**Opal**  
394



**Silver Papier**  
538



**Silver Neutral**  
406



**Cement Mix**  
750



**Steel Grey**  
471



**Grey Mix**  
238



**Flannel**  
795



**Medium Grey**  
298



**Black**  
408

# FR701® 2100

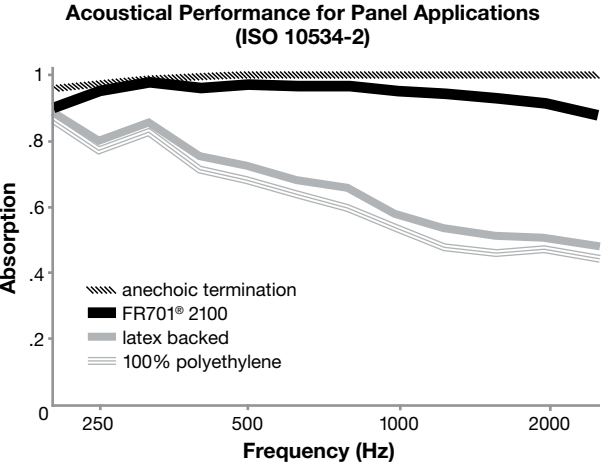
Panel  
Acoustic

## Specifications

- Content**  
100% post-consumer recycled polyester
- Weight**  
16.0 ± 0.5 oz./lin. yd.
- Width**  
66" min. useable
- Repeat**  
none

## Acoustical Performance

The plot below summarizes impedance tube measurements of absorption of an anechoic termination and various fabrics in front of the anechoic termination.



**NRC of anechoic termination**  
1.00

**NRC of fabric in front of anechoic termination**  
.95

## Cleaning Code

Standard Care Label W-S. Clean with water based cleaning agents, foam or pure, water free solvents. Vacuuming or light brushing is recommended to prevent dust and soil buildup.

## Performance

- Colorfastness to Light (AATCC 16 Option 3)**  
Grade 4 min. at 40 hours
- Colorfastness to Crocking (AATCC 8)**  
Grade 4 min. dry & Grade 3 min. wet
- Breaking Strength (ASTM D5034)**  
150 lbf min. warp and fill
- \* Flammability (ASTM E84)**  
Class I or A

## Sustainability

- 100% recycled and recyclable**  
Terratex is a registered trademark of Duvaltex
- facts<sup>™</sup> silver**

## Miscellaneous

5 year limited warranty. Proudly woven in North America supporting our local communities.

Every effort has been made to ensure color accuracy of the digital images, however, please order a sample before specification. Application testing of this product is recommended. Colors may vary between dye lots. This is a non-directional fabric.

Visit [guilfordofmaine.com](http://guilfordofmaine.com) for samples.

 This pattern is included in the underwriters laboratory panel fabric recognition program. Additional testing of this U.L. recognized component fabric is not required on approved panels from participating manufacturers.

\*Certification Marks owned by the Association for Contract Textiles, Inc.

## Guilford of Maine

[guilfordofmaine.com](http://guilfordofmaine.com)  
800 544 0200 Customer Care  
616 554 2255 Fax  
02/17